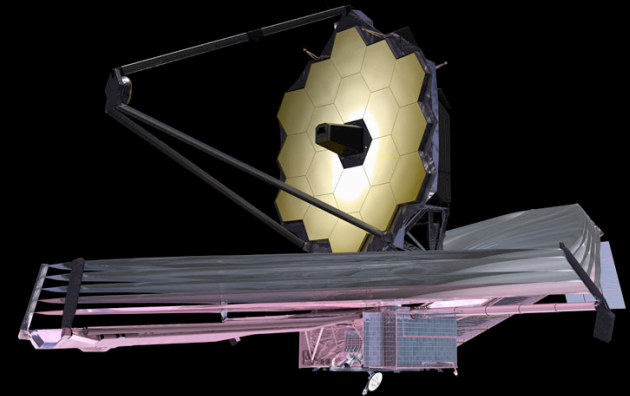




Marcel Haas  
(mhaas@stsci.edu)



# Strategic Theory for JWST

With: Mike Fall (PI), Massimo Stiavelli, Jason Tumlinson, Rick White  
Grad students: Cathy Caviglia, Zack Dugan

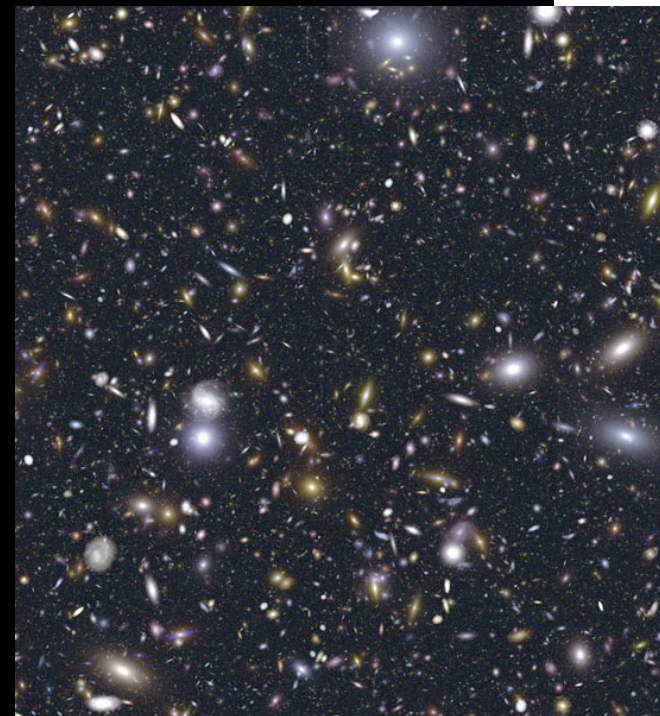
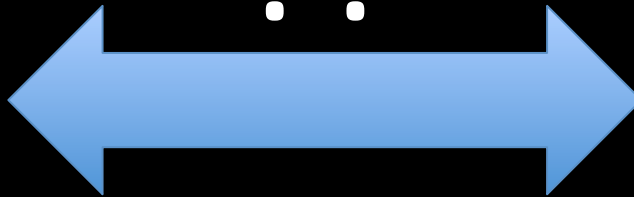
snap\_035.0.hdf5

- Constants
- Header
- Parameters
- PartType0
- PartType1
- PartType4
  - AExpMaximumEntropy
  - AExpMaximumTempera
  - Coordinates
  - Density
  - ElementAbundance
  - InitialMass
  - IronFromSNIa
  - Mass
  - MaximumEntropy
  - MaximumTemperature
  - Metallicity
  - MetallicityWeightedPote
  - MetallicityWeightedReds
  - ParticleIDs
  - Potential
  - SmoothedElementAbund
  - SmoothedIronFromSNIa
  - SmoothedMetallicity
  - SmoothingLength
  - StellarFormationTime
  - Velocity
  - WindFlag
- Units

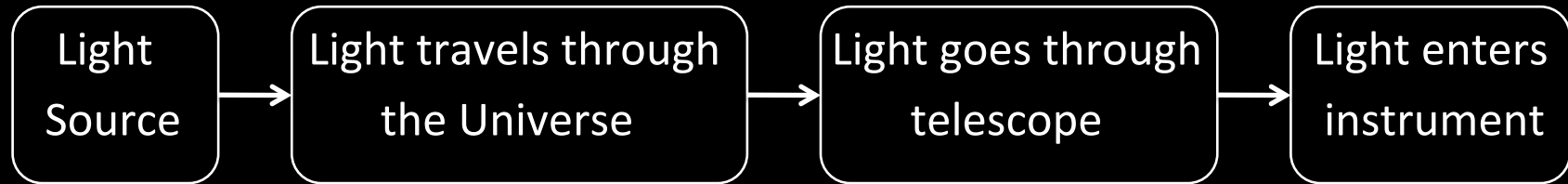
Table

	0	1	2
0	45.30335	4.6468835	47.217377
1	45.303493	4.6469994	47.217194
2	45.30376	4.64665	47.217033
3	45.303646	4.646813	47.217026
4	45.3034	4.646869	47.21726
5	45.303787	4.6468515	47.217426
6	45.303486	4.6467195	47.217625
7	45.30385	4.6472015	47.217552
8	45.303513	4.646942	47.217773
9	45.303333	4.6468813	47.217674
10	45.303333	4.6468844	47.217827
11	45.30352	4.6473517	47.21747
12	45.303497	4.6473026	47.217407
13	45.30382	4.647022	47.217632
14	45.303566	4.6473026	47.21781
15	45.303677	4.64733	47.217182
16	45.303616	4.6473904	47.217514
17	45.30341	4.646867	47.21723
18	45.30355	4.6476817	47.21748
19	45.303688	4.647724	47.217865
20	45.303043	4.648341	47.21783
21	45.303104	4.6475925	47.217785
22	45.3031	4.6479406	47.218056
23	45.30397	4.6481843	47.21776
24	45.30368	4.64753	47.21817
25	45.30375	4.6477866	47.217995
26	45.303974	4.6476564	47.217995
27	45.303947	4.647893	47.218277
28	45.303688	4.647751	47.218304
29	45.303997	4.6476007	47.21822
30	45.303642	4.647658	47.21868
31	45.303844	4.6478796	47.218792
32	45.30392	4.6481094	47.21848
33	45.30367	4.6476784	47.218536
34	45.30377	4.6481066	47.218292
35	45.303436	4.647697	47.218105
36	45.303547	4.6473966	47.218258
37	45.30331	4.647343	47.21832
38	45.30324	4.6471806	47.218292
39	45.30359	4.6471705	47.21875

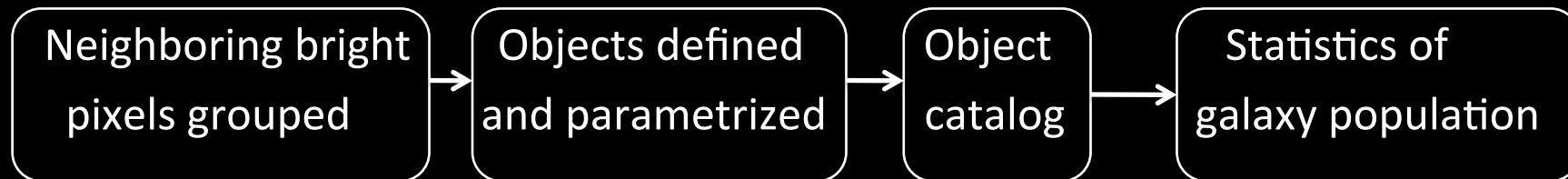
??



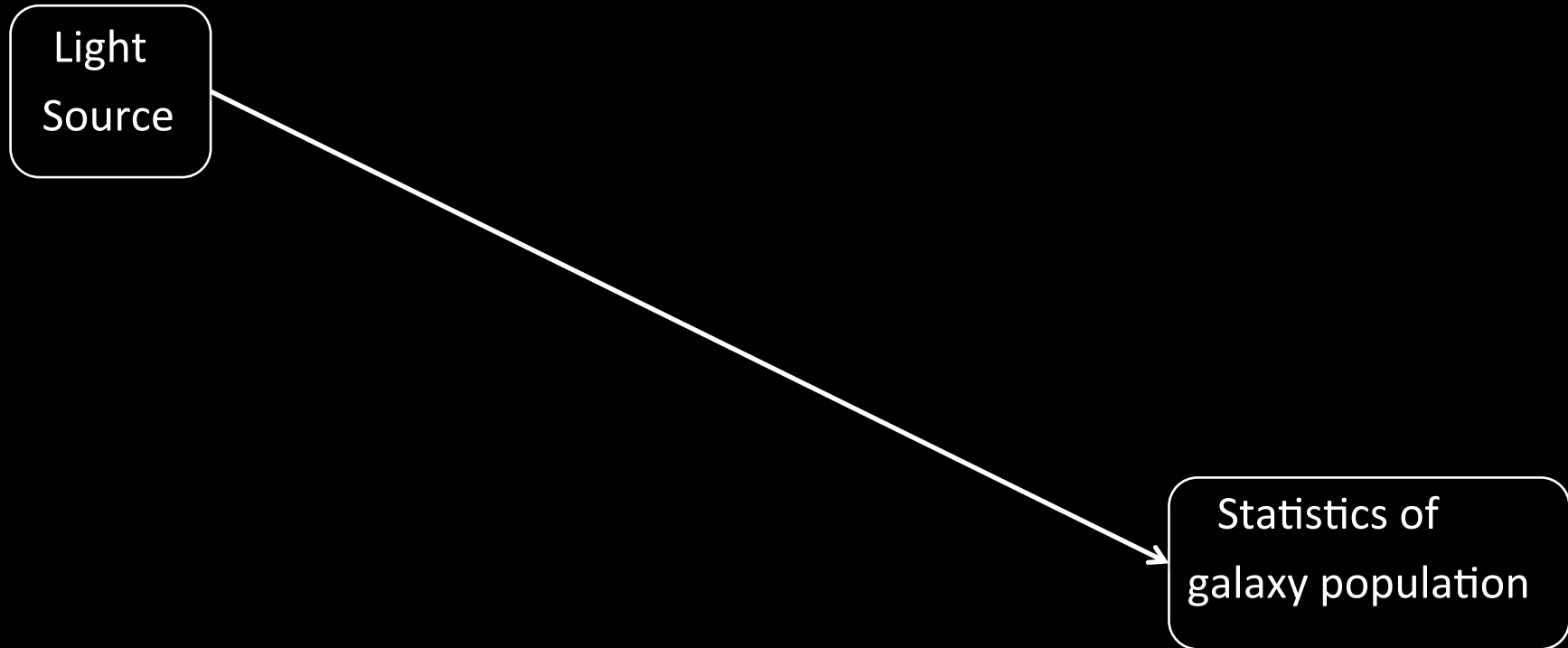
# Comparison between data and models



**IMAGE**



# Comparison between data and models

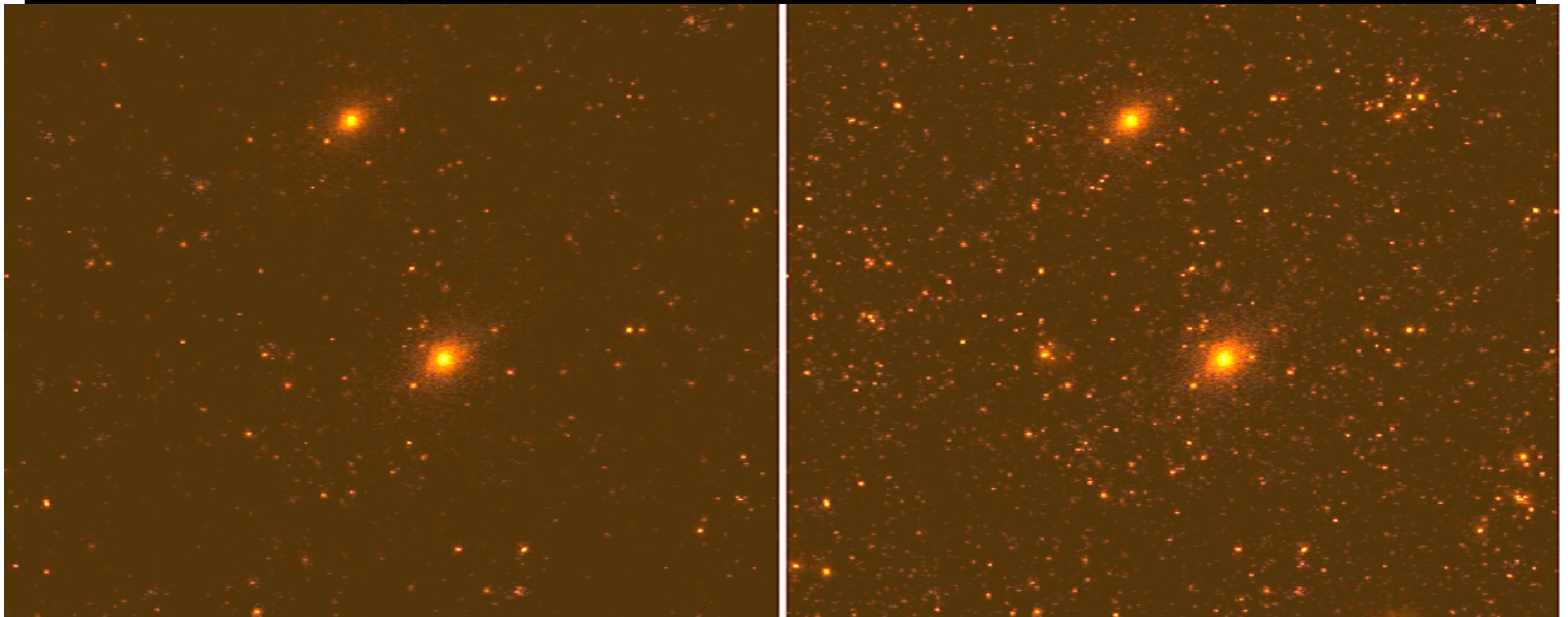


# An example with pictures...

Noise-free scene, Hydrodynamic simulation from  $z = 0-4$

Real World

Neglecting Surface Brightness dimming



0.0+00

4000+02

11000+03

24000+03

50000+03

100000+04

200000+04

400000+04

1.00+04